

THE CARRIERE® DISTALIZER™ APPLIANCE
Shifting the way you think about orthodontics.





The Carriere Philosophy.

Fast.

Shortens overall treatment time by up to four months as it treats Class II correction at the beginning of the orthodontic treatment, when there are no competing forces in the mouth caused by brackets or other appliances. A Class II correction can usually be completed in an average of 3-4 months.

Natural.

Mimicking a human hip ball-socket joint, the *Carriere Distalizer Appliance* allows the first molar to rotate and upright in its natural and correct finishing position, producing a continuous, natural, and uniform force for distal molar movement with controlled rotation and tipping correction. Built-in stops engineered in the appliance prevent the molars from over-rotating and the crowns from distal tipping. The *Carriere Distalizer Appliance's* low forces are biologically compatible during the Class II treatment.

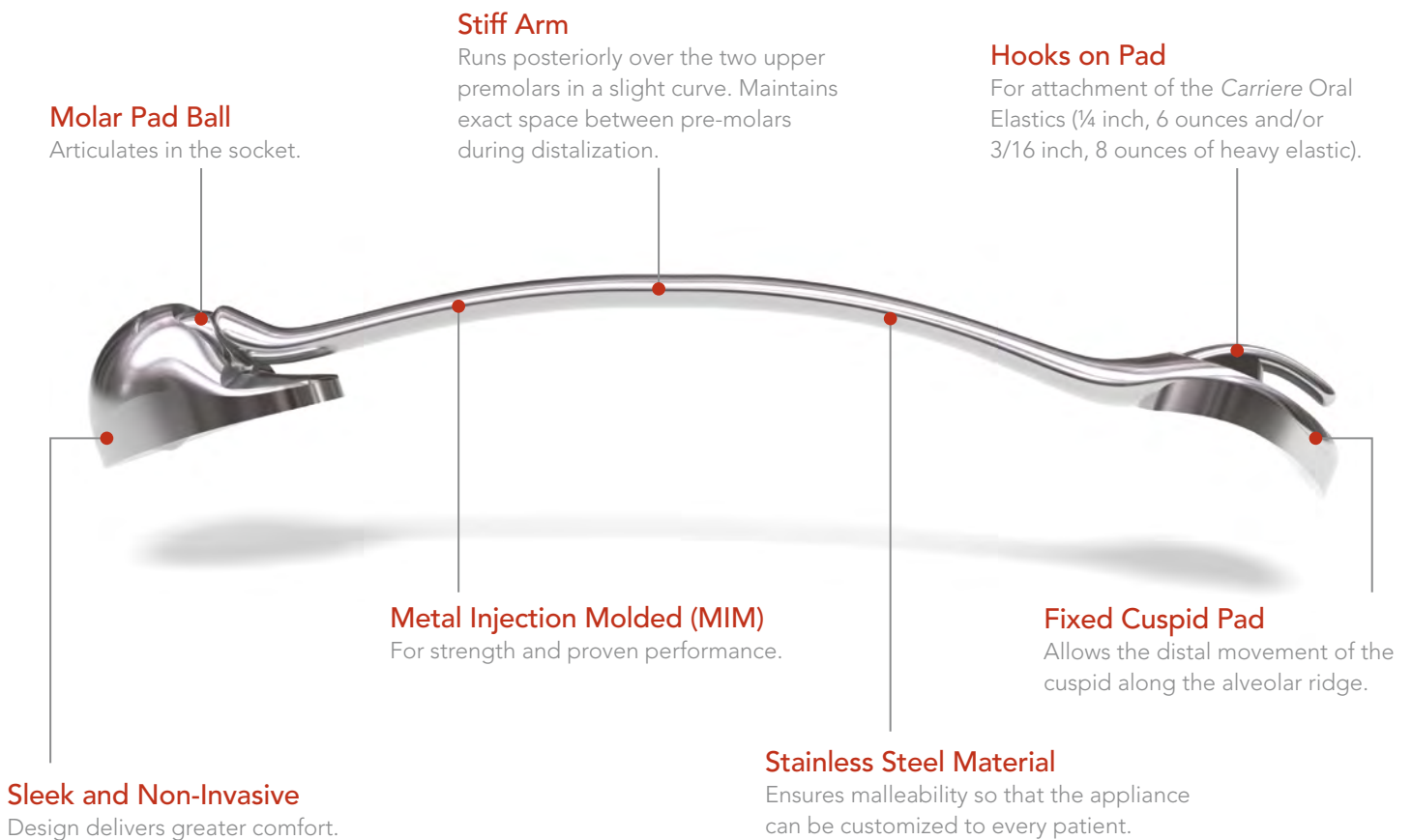
Gentle.

The low force of the *Carriere Distalizer Appliance* is gentle on your patients, and its low profile design is very comfortable to wear. By treating the Class II platform first, it simplifies the entire treatment for you, and provides greater comfort for your patients.

The Carriere Distalizer Appliance

A huge move in the right direction for orthodontics.

To limit extractions and to turn difficult Class II cases into simpler Class I cases is a dream come true for you and your patients. With its sleek, aesthetic and non-invasive design, the *Carriere Distalizer* Class II Correction Appliance provides greater comfort and shortens treatment time by up to four months. Delivering a natural, gentle, and uniform force for distal molar movement with controlled rotation and tipping correction before brackets or other appliances are placed, the *Carriere Distalizer* Appliance solves complex problems almost effortlessly.



Loose but Controlled Forces: The ball and socket joint provides maximum freedom of movement, but also has built-in stops that allow the molars to move directly to their desired position while preventing any unwanted over rotation or tipping.

Going from Class II to Class I has never been easier.

The *Carriere Distalizer* is a direct bond appliance that attaches to the maxillary canine and first permanent molar, providing a simple procedure for turning complex Class II cases into a Class I platform. Once a Class I condition is achieved, malocclusions become easier to treat and can be finished with your preferred orthodontic technique. Since there are no competing forces in the mouth when using this appliance, average Class II correction can usually be achieved in just three to four months.

- Eliminates wire changes and the distorting collateral forces that appear with every wire activation used in traditional methods.
- Minimizes root resorption.
- Patients are treated faster with less discomfort.
- High level of patient compliance as the appliance is aesthetically pleasing, and used during the initial phase of treatment when patient's motivation is still high.

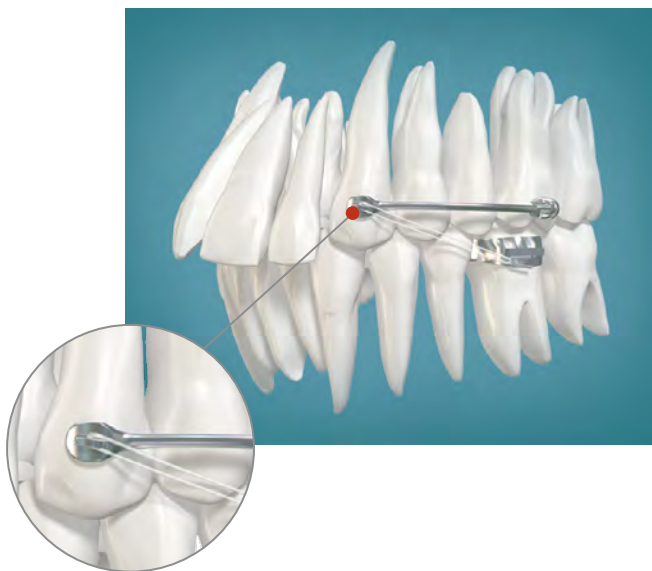


Fig. A | *Carriere Distalizer* with *Carriere Oral Elastic* attached to hook on the cuspid pad. Class I Platform is present when a cuspid occlusion, in which centric relation coincides with centric occlusion, and the molar occlusal relationships are a perfect Class I.

How it Works.

- Corrects the posterior occlusion to an ideal Class I platform first by rotating and uprighting the maxillary first molars while distalizing the posterior segment, from canine or premolar to molars, into a perfect occlusion.
- Simultaneously produces a light, uniform force for distal molar movement.
- Independently moves each posterior segment, from canine or premolar to molar, as a unit.
- Used at the beginning of treatment when there are no competing forces in the mouth allows the distalization of the molars and premolars from 3 to 6mm range, on average.

Indications.

- Most effective in treating Class II symmetrical and asymmetrical malocclusions without the need for extractions.
- May also be used in many Class I cases with mesially positioned maxillary molars.
- Growing patients are ideal, but adults may be treated as well.
- Mixed dentition Class II cases with fully erupted molars are candidates for Phase 1 treatment to establish a Class I platform.

Ease of Placement.

The *Carriere Distalizer* Appliance is placed on the maxillary arch, but requires a solid and consistent source of anchorage in the mandibular arch to avoid protrusion of the lower incisors (a lower Essix Appliance with direct bonded tubes on lower molars, a passive lingual arch, a full mandibular fixed appliance, or mini-screws). Once the appliance is bonded, the *Carriere* Oral Elastics are attached from the mandibular molar to the hook of the maxillary cuspid of the *Carriere Distalizer* to activate.

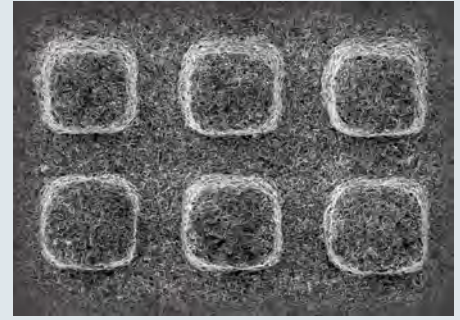


Fig. B | The *Carriere* with the LX Difference: Micro-etched surface for increased bond strength.

The Movement Created by the *Carriere Distalizer*.

Bodily distalizes the maxillary posterior segments as a block while correcting upper first molar rotation and uprighting. The posterior portion of the *Carriere Distalizer* Appliance accomplishes three types of molar movement:

1. Uprighting of the crown, if it is mesially inclined (*Fig. 01*). Once the molar has been uprighted, the articulation of the ball with the socket prevents distal tipping.
2. Distal rotation around the palatal root. When the maxillary first molar is mesially rotated around the palatal root, the molar occlusion may appear to be Class II, while in reality it is Class I with the canines in a cusp-to-cusp relationship (*Fig. 02*). When the molar has been de-rotated, the shoulder of the posterior base contacts the mesial arm to prevent over-rotation.
3. Distal displacement without concurrent distal tipping of the crown.



Fig. 01 | Provides controlled molar rotation and uprighting.



Fig. 02 | The maxillary molars are distalized and rotated, providing a platform for maxillary canines to occlude in a Class I relationship.



Fig. 03 | With mesially rotated molars, cusps cannot occlude in Class I relationship.



Fig. 04 | Independently moves each posterior segment, from canine or premolar to molar, as a unit.

To learn more,
call us at 888.851.0533.

Class II Correction with Clear Aligner Systems.

The *Carriere Distalizer* Appliance may be used with patients who want to be treated with clear aligners, but display a Class II malocclusion. This allows practitioners to treat more patients requesting clear aligners without limitations. Now complex Class II malocclusion cases can be “jump started” with the *Carriere Distalizer* Appliance and finished with a clear aligner system.










The Carriere Distalizer Appliance

| Description / Size | Item Numbers LEFT & RIGHT (1SET) |
|---|-------------------------------------|
| KITS | |
| <i>Carriere Distalizer</i> Standard Kit (1 set of each 23, 25, 27mm) | 424-900CN |
| <i>Carriere Distalizer</i> Master Kit (1 set of each 16, 18, 20, 23, 25, 27mm) | 424-901CN |
| <i>Carriere Distalizer</i> Mega Kit (20 sets) 2 sets of 16mm 3 sets of 18mm 2 sets of 20mm 3 sets of 23mm 6 sets of 25mm 4 sets of 27mm | 424-902CN |

| Description / Size | Color-Code | Item Numbers LEFT | Item Numbers RIGHT | Item Numbers LEFT & RIGHT (1SET) |
|---------------------------------------|------------|----------------------|-----------------------|-------------------------------------|
| FIRST BICUSPID TO FIRST MOLAR* | | | | |
| <i>Carriere Distalizer</i> 12mm | - | 424-912LN | 424-912RN | 424-912CN |
| <i>Carriere Distalizer</i> 13mm | - | 424-913LN | 424-913RN | 424-913CN |
| <i>Carriere Distalizer</i> 14mm | - | 424-914LN | 424-914RN | 424-914CN |
| <i>Carriere Distalizer</i> 15mm | - | 424-915LN | 424-915RN | 424-915CN |
| <i>Carriere Distalizer</i> 16mm | White | ○ 424-916LN | ○○ 424-916RN | 424-916CN |
| <i>Carriere Distalizer</i> 17mm | - | 424-917LN | 424-917RN | 424-917CN |
| <i>Carriere Distalizer</i> 18mm | Blue | ● 424-918LN | ●● 424-918RN | 424-918CN |
| <i>Carriere Distalizer</i> 19mm | - | 424-919LN | 424-919RN | 424-919CN |
| <i>Carriere Distalizer</i> 20mm | Pink | ● 424-920LN | ●● 424-920RN | 424-920CN |
| <i>Carriere Distalizer</i> 21mm | - | 424-921LN | 424-921RN | 424-921CN |

The Carriere Distalizer Appliance

| Description / Size | Color-Code | Item Numbers LEFT | Item Numbers RIGHT | Item Numbers LEFT & RIGHT (1SET) |
|-------------------------------|------------|---|---|----------------------------------|
| CUSPID TO FIRST MOLAR* | | | | |
| Carriere Distalizer 22mm | - | 424-922LN | 424-922RN | 424-922CN |
| Carriere Distalizer 23mm | Yellow |  424-923LN |   424-923RN | 424-923CN |
| Carriere Distalizer 24mm | - | 424-924LN | 424-924RN | 424-924CN |
| Carriere Distalizer 25mm | Red |  424-925LN |   424-925RN | 424-925CN |
| Carriere Distalizer 26mm | - | 424-926LN | 424-926RN | 424-926CN |
| Carriere Distalizer 27mm | Green |  424-927LN |   424-927RN | 424-927CN |
| Carriere Distalizer 28mm | - | 424-928LN | 424-928RN | 424-928CN |
| Carriere Distalizer 29mm | - | 424-929LN | 424-929RN | 424-929CN |
| Carriere Distalizer 30mm | - | 424-930LN | 424-930RN | 424-930CN |
| Carriere Distalizer 31mm | - | 424-931LN | 424-931RN | 424-931CN |
| Carriere Distalizer 32mm | - | 424-932LN | 424-932RN | 424-932CN |
| Carriere Distalizer 33mm | - | 424-933LN | 424-933RN | 424-933CN |
| Carriere Distalizer 34mm | - | 424-934LN | 424-934RN | 424-934CN |

| Description / Size | Item Numbers |
|---|--------------|
| ACCESSORIES | |
| Typodont-25mm Distalizer with Lingual Arch | 631-017DN |
| Carriere Distalizer Elastics - Force 1 (50 packs of 100 elastics) | 424-9F1 |
| Carriere Distalizer Elastics - Force 2 (50 packs of 100 elastics) | 424-9F2 |
| Carriere Distalizer Storage Tray 1/pk | CDA-TRAY |
| Fixed Lingual Contour Arch Appliance for Lower Anchorage Kit (5 of each size) | 032-060 |
| Fixed Lingual Contour Arch Appliance for Lower Anchorage, Size 1 | 032-061 |
| Fixed Lingual Contour Arch Appliance for Lower Anchorage, Size 2 | 032-062 |
| Fixed Lingual Contour Arch Appliance for Lower Anchorage, Size 3 | 032-063 |
| Fixed Lingual Contour Arch Appliance for Lower Anchorage, Size 4 | 032-064 |

*"First Bicuspid to First Molar" and "Cuspid to Molar " descriptions are an estimated guide of use. The size distalizer and span of teeth are dependent upon the age and size of each patient.

Carriere Oral Elastics



Complement the *Carriere Distalizer Appliance* with *Carriere Oral Elastics*, which were designed specifically to work seamlessly with this appliance and provide optimum results. These elastics are available in two different force levels for both stages of treatment, ensuring a smooth and timely transition to a Class 1 platform.

The Carriere Self-Ligating Bracket System.

Also available for use with the *Carriere Distalizer Appliance* is the *Carriere Self-Ligating Bracket*. The bracket is one of the lowest profile and fastest growing self-ligating brackets on the market today. It is specifically designed to meet your goal of low-friction and low-force by providing greater control in the bracket archwire interface through ultra light forces. In addition, the *Carriere Self-Ligating Bracket* with the LX difference will provide you with the following:



- Micro-etched surface for increased bond strength.
- Lowest profile and less bulk in comparison to Damon 2 and 3™ and In-Ovation-R®, with smooth labial surface of the locking mechanism, enhancing patient comfort.
- Color-coded brackets for easier identification.
- Simple locking mechanism that opens with a Wire Director and Opener Tool, facilitating easier archwire placement and assisting with opening and closing of the gate.



For more information on our products and educational offerings, please contact us:

In the U.S. 888.851.0533 | Outside the U.S. +(1) 760 448 8600 | Canada: CERUM 800.661.9567

To fax an order: 800.888.7244 | To email an order: USASales@OrthoOrganizers.com

CarriereSystem.com

© 2011 Ortho Organizers, Inc. All rights reserved. PN 999-242 03/11. U.S. Patent No. 7,621,743, 7,618,257, 6,976,839, and 7,238,022 and foreign patents. Damon 2, Damon 3, and In-Ovation-R are the property of their respective owners.

